



State of the Pueblo

Jean Paine, President

As I have said in the past and no doubt will say in the future Catalina Pueblo is a marvelous place to live. During these trying and stressful times I have seen a demonstration of what it means to be good neighbors. Here are but a few examples:

- Open to all . . . the neighborhood walks (as you can see below - they include masks & social distancing), scavenger hunts and happy hours
- Offers to pick up groceries or items at the drugstore abound
- Boxes of fresh produce available to one and all
- Homemade cookies and soups shared
- Car trouble and suddenly numerous people offer help
- Need help cleaning up your yard and volunteers appear
- Folks who can sew made masks for those of us who can't

Beautiful and amazing indeed CPer. Thank you.

I know we all look forward to the reopening of our three pools. As soon as the governor lifts the closure order we will announce it. We are very lucky to have three pools so that we can continue to support appropriate precautions.

The newsletter will be resting over the summer months but your Board members will still be available, if needed, and continue to support and maintain our super community.



Pool Chair

Mike Wattis

We are ready to open our pools as soon as we are given the OK from the State. Adelita pool and spa will be serviced three times a week with the other two pools scheduled for service twice a week.

We purchased 8 lounges last year for Adelita and moved the extras to the other pools. Robert hauled away the worn/ripped chairs. I'll take an inventory of pool lounges and chairs and replace as needed.

I've asked our pool maintenance company for a quote to remove tile scale at Adelita pool/spa. I'll wait to do others.

Generally I'm trying to watch budget expenses until we see what the new norm is. We may need to increase pool service and housekeeping even further, which I won't hesitate to do.

Inside This Issue:

Page 2
Landscape Committee

Page 3
Architecture Committee

Page 4
Garden Gallimaufry

Page 5
Pueblo Recipes

Page 6
Practical Pueblo
Snake Bites

Page 7
Around the Pueblo
Photo Essay
by Bob Garrett

Page 8
Tried & True Trades

Page 9
March Financials

Page 10
Committees
Board of Directors
RES our Trash Hawler



Landscape Committee Chair Joey Tanner Barbee

WE MAY BE IN LOCKDOWN BUT THE PACK-RATS ARE WITH US!

Please don't invite them to your property!

Pack Rats LOVE this



Pack Rats HATE this



Packrats like:

- Messy cactus gardens.
- Low-branched Agaves and Desert Spoon.
- Dense Prickly Pear Cactus
- Rock piles.
- Blocks of quail seed.
- Open garage doors.
- Mounds of dead cactus, grass and garden debris.
- Car engines.



Above photo & graphic by Bob Garrett

Factors Affecting Pack Rat Population Growth

Harborage

Packrats need a safe place to make a home and cover for protection. Existing rat nests and excess vegetation are best. Trapping a rat and removing its nest eliminates not just one rat, but also any future occupants and all the resulting offspring. Reducing potential harborage and excess cover are excellent methods of preventing problems before they occur.

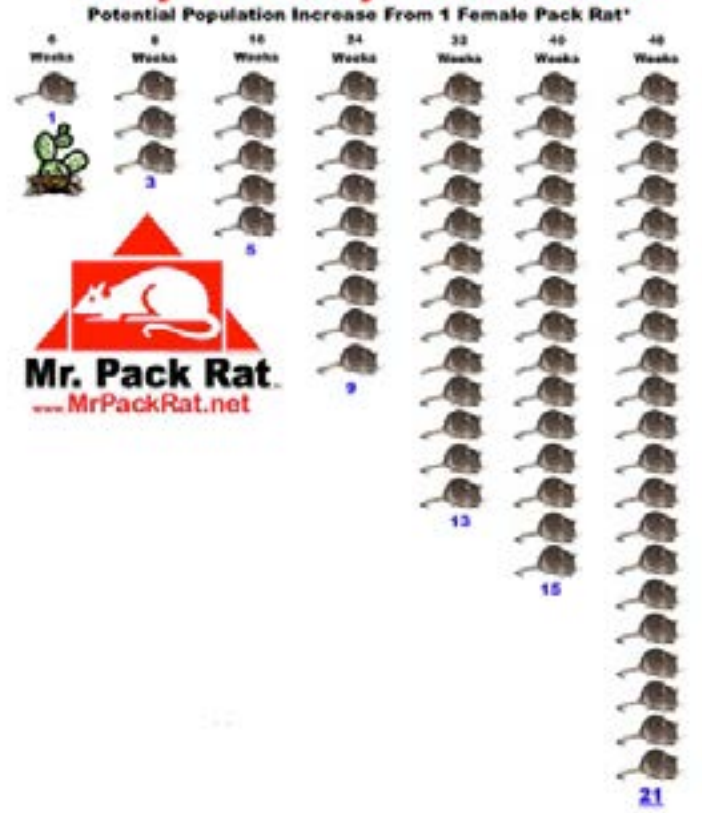
Predators

Ideally natural predators keep pack rat populations in check, but housing development and the use of poison bait reduce the available predators.

Weather

Rain increases vegetation and cover and the pack rat population also increases. Hard freezes may kill some pack rats in new and inadequate nests in established nests, but rats in established nests do fine in all weather.

Why So Many Pack Rats?



Architectural Committee Chair Warren Edminster, AIA

NOTES FROM THE ARCHITECTURAL COMMITTEE

I don't know about you folks, but for me, this semi-hibernation of COVID-19 has caused some pleasant side effects. I have had a chance to review some of my art work in storage. As an Architect, it has been a great joy for me to visit some of the structures and monuments that I first read about in my Architectural classes at the University of Illinois. Quite frankly I never thought that I would ever visit and actually sketch some of these structures and monuments. Bev and I have been very fortunate to have traveled in Greece, Turkey, Japan ,Germany (three times), Scandinavia, Ireland, Austria, Panama, Mexico, Canada and a great deal of our own U.S. Everywhere we have traveled I have sketched what I felt was the more important Architecture that we could visit. It has been a great joy for me to do this.

Every year for the last 59 years I have made a Christmas card with one of my sketches of some type of religious structure, and mailed these to my friends and clients. Some 250 cards each year. (250 x 59 =14,750) . This is bunch of cards!

We have to realize how fortunate we are to be living in our little part of Heaven called Catalina Pueblo! Our architecture has a special ambiance that is not found anywhere else in Tucson and perhaps even throughout the southwest. It is with pride and pleasure that this Architectural Committee takes on the task of reviewing any proposed changes to our homes. Thanks for that opportunity.



Spotlight on a Neighbor . . . Cory the Security Guard Pat Weigand



A new neighbor has moved into the Pueblo. He is a fairly young fellow, who is employed as a Security Guard for one of your neighbors. Born in Tubac, Arizona, he decided to leave his comfy den and make it on his own in the “big” city of Tucson. Because of his “colorful” background, he had to change his name. The name he selected is Cory, which is short for.....wait for it..... Corona Viper.

Mark J. Sammons
cookfarm@comcast.net
 615-6019

MAY GARDEN CHORES

Finish planting cactus, succulents, palms.

Postpone planting native perennials and shrubs until fall.

Protect newly-planted cacti & succulents from sunburn with shade cloth or cheese cloth through their first summer.

Increase watering frequency and/or quantity until monsoons arrive, then modulate downward.

Until monsoons come, water in-ground cactus and succulents once or twice a month, and potted specimens weekly when temperatures are regularly 90+ degrees.

Dump potted winter annuals, wash pots with bleach solution, and put away.

Fertilize citrus, fruit trees, roses around Valentines Day, Memorial Day, and Labor Day.

MAY GARDEN CHORES continued on pages 6 & 10

List of plants suited to Pueblo gardens, online at:
<https://catalinapueblo.com/plant-list/>

Garden Gallimaufry

Mark Sammons

When we first moved here, we knew of prickly pear cacti only in the most generic cartoonish way. But pretty quickly we noticed all the different shapes and tints of paddles and lengths – or absence – of spines. All have their own fascinating aspects, but only one might be called majestic. This is *Opuntia ficus-indica*, the Indian fig cactus.

This is the paddle cactus that grows ten to fifteen feet tall, sometimes with few or no spines. The tender young paddles that emerge in early May are the source of nopales, the sliced cactus available at the grocery store in cans or jars. The same plant is the source of the prickly pear fruits for sale in grocery stores. They have a weak watery taste reminiscent of watermelon, and a lot of small hard seeds.

For their food value, Native Americans domesticated and disseminated throughout the hot parts of North and South America and the Caribbean several species of paddle cactus. This has somewhat obscured the exact origin of the Indian-fig cactus, but genetic research points to Mexico. For its enduring value, the Indian fig cactus figures in the national emblem of Mexico; look closely and you'll see that the eagle stands on an Indian fig cactus.

When Europeans stumbled across this native crop plant, they quickly recognized the food value for hot dry climates like Spain's, and took it back along with various other New World crops. It was quickly introduced to North Africa and other Mediterranean countries. The fruit is sometimes called Barbary fig, an association with the Moroccan coast. It has become invasive in some areas. I've seen miles of the southwest flank of Mount Etna in Sicily choked with this cactus. Yet it is still cultivated in Mediterranean gardens for its usefulness and handsome form.

The Latin name "indica" refers to India, an archaic generic European term for Asia. This error suggests the plant was imported to Europe so promptly, that Europeans had not yet sorted out that their earliest adventurers were not where they thought they were.



Europeans sorted out their world geography eventually. In the mid 1600s, when the great Italian baroque architect Gian Lorenzo Bernini designed the spectacular Fountain of the Four Rivers in Rome's Piazza Navona, he included the Indian fig cactus carved in stone as part of the allegorical representation of America (and there is an American alligator too). If you get to Rome, take a closer look at the lower parts of the extravagant monument for its plants and animals.

As the plant's origin would suggest, it requires the same cultivation as any other cactus: gritty well-drained soil, and plenty of sun and heat. It is front hardy, although prolonged deep freeze such as we had in February of 2011, can kill it back to the oldest and hardest paddles.

Now, when the soil is warm, is the season for planting cacti and succulents. If you are planting a potted specimen, dig a hole as deep as the pot, and three times as wide as the pot. This loosens the backfill so the plant can spread its roots horizontally.

Alternatively, you can get a paddle from a friend, dry it in the shade for a few days, then plant it in the ground, water it once, and wait.

With either method of planting, be aware of two things. It will eventually become huge – ten to fifteen feet in height, ten feet wide – and javelin-throwers love to eat them. If you plant it outside your garden walls, protect the young plant until it has developed ample paddles above snacking height, and the base has become woody.

pueblorecipes

recipes collected and edited by david scott allen • may 2020

This cheesecake slice is perfect on its own, or it can be garnished with fresh berries, a berry sauce, or even a drizzle of light, local honey.

These are rough times, and a sweet treat like this may be just what everyone needs.



Cheesecake Slices

24 graham crackers, ground
3 tablespoon butter, melted
1 tablespoon sugar
1 tablespoon cinnamon (optional)
3 8-ounce packages cream cheese, room temperature
1 cup white sugar
4 whole eggs

TOPPING
1 pint sour cream
2 tablespoon sugar
1 teaspoon vanilla extract

Preheat oven to 350°F. Combine graham crackers, butter, sugar, cinnamon and press over bottom of 9-inch by 13-inch pan. Beat the cream cheese; add sugar and cream well. Then add eggs one at a time, beating well after each. Pour in shell and bake for 35 minutes. Remove from oven, increase oven heat to 400°F, and cool cake on a rack for 5 minutes.

Mix topping ingredients thoroughly and spread over cooked cream cheese mixture; bake 5 minutes. Remove from oven and let cool fully before refrigerating. Cut into 2-inch squares and serve.

Makes 24-30 squares.

This recipe, and many more, can be found on David's blog, Cocoa & Lavender - cocoaandlavender.blogspot.com. If you have any culinary questions for David, feel free to email him at cocoaandlavender@gmail.com.



The Practical Pueblo

Compiled by Pat Weigand

MAY GARDEN CHORES continued

Your citrus trees will shed small fruits they can't carry through to ripeness; don't panic, this is natural.

Summer annuals for sun include calibrachoa (million bells), celosia, cosmos, marigolds, nierembergia, petunias, periwinkle, portulaca, sweet potato vines, and verbena.

Summer annuals for bright shade include begonias, caladium, coleus, dahlias, impatiens.

Summer vegetables include tomatoes, peppers, watermelon, eggplant, and squash. Basil loves summer. Give it rich moist soil, morning sun, afternoon shade. Don't worry about leaf-cutter bees carving little semicircles out of leaves; it doesn't hurt the plant, so don't spray.

Spider mites flourish in dry dusty weather. If you see them, hose down the plant vigorously, and clean up litter from beneath plants. If mites get really bad, do careful website research on options, spray when air is still, and let your neighbors know ahead of time so they can close their windows.

Snake Bites: Forget Everything You Learned as a Kid !

As the warm weather approaches, the possibility of encountering a rattlesnake along a walk or a hike exists. Active months in Tucson for rattlers are Mid-March through October. The following information, condensed from webmd.com, is worthy of review:

If you are bitten by a snake or lizard that you know or think is poisonous, call 911 immediately. Do not wait for symptoms to develop. Symptoms may progress from mild to severe rapidly.

Immediate home treatment: Immediate home treatment should not delay transport for emergency evaluation.

- If you think the snake bite is an emergency, call 911.
- Remain calm and try to rest quietly.
- If you are not sure what type of snake or lizard bit you, call The Arizona Poison and Drug Information Center 1-800-222-1222 immediately to help identify the snake or lizard and find out what to do next.
- Remove any jewelry. The limbs might swell, making it harder to remove the jewelry after swelling begins.
- Use a pen to mark the edge of the swelling around the bite every 15 minutes. This will help your doctor estimate how the venom is moving in your body.

Avoid these treatment measures: Avoid doing anything that might cause more problems with the snake or lizard bite:

- Do not cut the bite open.
- Do not suck on the bite wound or use any kind of extraction device.
- Do not use a constriction band, such as a tourniquet or bandage, on a bite.

- Do not soak your hand or foot in ice water or pack your arm or leg in ice. This can increase damage to the skin and cause a cold-induced injury, such as frostbite.
- Do not raise the bitten arm or leg above your head. This may increase the flow of venom into the bloodstream.
- Do not drink alcohol.
- Do not give any prescription or nonprescription medicines after a poisonous snake or lizard bite unless your doctor tells you to. Some medicines, such as aspirin, ibuprofen, or naproxen, may cause increased bleeding.

If you are not sure what type of snake or lizard bit you, take a picture of it, but do not do this if it will delay treatment or put someone at risk for more bites. Do not waste time or take any risks trying to kill or bring in the snake. Only trap a poisonous snake if the chances are good that it will bite more people if you let it go. It is important to remember that a snake only injects part of its venom with each bite, so it can still hurt you after the first strike. And a dead snake, even one with a severed head, can bite and release venom by reflex action for up to 90 minutes after it dies.

Medicine (anti-venom) to counteract the effects of the poison can save a limb or your life. Anti-venom is given as soon as a doctor determines it is needed, usually within the first 4 hours after the snakebite. Anti-venom may be effective up to 2 weeks or more after a snakebite.

For more information, see <https://azpoison.com/venom/rattlesnakes>



Photo taken by Gail Reich during her walk last week across Skyline at the north end of Posada



ANY AUTUMN STROLL around our Pueblo reveals an amazing array of beautiful sights, from flowering cactus and desert shrubs to incredible mountain views. And it's great exercise, too, but try not to trip over a wild rabbit.



Tried & True Trades

Appliance Repair

EMSP Appliance Repair 520-661-0030

Recommended by Bill & Lee Strang

2 son's Finest Appliances

Recommended by Marianne Van Zyll

Concrete, Masonry, Block, Adobe & Stucco Repair

Tony Gonzalez 520-250-6769

Recommended by Joey Tanner Barbee

Armando Pacheco - 520-338-3980

Recommended by David Scott Allen & Mark Sammons

Ed Carrillo (Stucco) 520-360-0405

Recommended by John & Ann Berkman

Tony Scott- (Tile & Stone Mason) 520-336-0634

Recommended by Jean Paine and John & Ann Berkman

Facials

Lianae ZL Medaesthetics

520-204-1956

Recommended by Jo Ann Marcus

Handyman

Carlson Eby 520-343-9348

Recommended by Marianne Van Zyll & Deb Perry

Jonathan Wilt 520-870-1572

Recommended by Mike & Carolyn Rockwell

Richard Floyd 520-404-5806

Recommended by Olive Mondello

Dallas Davis 520-403-1356

Recommended by Gisele Nelson

Nailed It: Mark Confer 520-990-8823

Recommended by Frank & Pamela Bangs

John Landers 520-609-2530

Recommended by John & Ann Berkman

John Gordon 520-282-1725

Recommended by Marti Greason

Home Checks & Caretaking

Catalina Concierge - Marco Manzo

520-628-0206

Recommended by Ken Conant and Jim Sankey

House Cleaning Services

Claudia Tapia - 520-257-7528

Recommended by Marian Ries

Fernando Mendez 520-445-1061

Alex's Cleaning Service

Recommended by Jo Ann Marcus

Angie Stokes 520-270-4875

Housekeeping, windows, patio & yard clean up

Recommended by Nanci Hartwick

HVAC

Family Air Cooling & Heating 520-399-5850

Recommended by Jo Ann Marcus

Temperature Control, Inc. -- Shawn Davis

520-544-KOOL (5665)

Recommended by Marti Greason

Locksmith

Key One Inc 520-327-3432

Recommended by Bill & Lee Strang

Landscaping/Gardeners

Jose A. Enriquez 520-975-9785

Recommended by Gail Reich & David Holter

Francisco Enriquez 520-405-8527

Recommended by Jean Paine and Bill & Lee Strang

Manicure/Pedicure, Gels - Waxing

Nails by Yen 520-638-8840

Recommended by JoAnn Marcus & Connie Church

Massage Therapists

Intentional Grounding, massage by Colleen

cmavender @gmail.com - 520-577-4543

Recommended by Marti Greason

Brandy Rodriguez LMT - 520-256-5671

Recommended by Jo Ann Marcus

Ginger Castle LMT CKTP - 520-877-0038

Recommended by Marianne Van Zyll

Painting & Decorative Artist

Mary Howard - 520-991-5336

Recommended by Marianne Van Zyll

Painting

Dennis Detmering 727-244-0810

Recommended by Jane Hamilton

Luis Ramirez - 520-740-0494

Recommended by Roy Langenberg

Pet Grooming

Just Dogs by Jenni Vance -- 520-389-2269

Mobile Grooming

Recommended by Jo Ann Marcus

Pet & House Care

Gregory Matthews

520-299-1260 cell 520-241-8028

Recommended by Nanci Hartwick, Marti Greason,

Kay Stephenson

Plumber

Beyond Plumbing -Mike Moyer 520-409-2549

Recommended by Jo Ann Marcus

Dependable Plumbing Services- David Solis

520-990-5437

Recommended by Jean Paine

Real Estate

Russ Carden - 520-235-5411

Associate Broker - Long Realty

Recommended by Pat Weigand

Remodel/Construction

Shawn Henderson 520-745-2169

Recommended by Marti Greason & Jean Paine

Roofing

Alan Bradley Roofing 520-885-3571

Recommended by JoAnn Marcus

Window Cleaning

Better View Professional Windows &

Miniblind Cleaners 520-917-3333

Recommended by David Scott Allen & Mark Sammons

Treasurer Report

Pat Weigand, Treasurer

The March Budget is well-within plan, due to the fiscal responsibility of the Committee Members. However, the COVID-19 response within the Pueblo could possibly produce some effect (both positive and negative) on the April and May balance sheets, due to more frequent pool area cleaning, the requirement to maintain chemicals, and a decrease in electric use. We do not expect this difference to be significant.

Catalina Pueblo Association Statements of Cash Flows and Budget March 2020

	2020 YTD Actual	2020 Annual Budget	Budget YTD Remaining
Income:			
Association Dues	\$ 80,130.00	\$ 81,000.00	\$ 870.00
Title Transfer Fees	\$ 400.00	\$ 1,600.00	\$ 1,200.00
TOTAL INCOME	\$ 80,530.00	\$ 82,600.00	\$ 2,070.00
Expenses:			
Administrative:			
Postage/Printing/Other	\$ 479.93	\$ 900.00	\$ 420.07
Website		\$ 100.00	\$ 100.00
Professiona Services (Bnkg/CPA/Atty)	\$ 254.75	\$ 3,600.00	\$ 3,345.25
Property Tax/Licenses		\$ 200.00	\$ 200.00
Insurance		\$ 3,200.00	\$ 3,200.00
Reimbursed Expenses			\$ -
Subtotal	\$ 734.68	\$ 8,000.00	\$ 7,265.32
Neighborhood Infrastructure:			
Contracted Monthly Landscaping	\$ 2,100.00	\$ 8,400.00	\$ 6,300.00
Landscaping Maintenance, Project & Design	\$ 37.11	\$ 8,500.00	\$ 8,462.89
Watershed Management Project		\$ 4,000.00	\$ 4,000.00
Roads & Drainage	\$ 244.74	\$ 250.00	\$ 5.26
Security & Lightbulbs	\$ 258.60	\$ 1,000.00	\$ 741.40
Subtotal	\$ 2,640.45	\$ 22,150.00	\$ 19,509.55
Neighborhood Social Activites:	\$ 1,658.23	\$ 4,000.00	\$ 2,341.77
Recreational - Pools:			
Routine Services/Chemicals	\$ 1,160.00	\$ 8,500.00	\$ 7,340.00
3 Pools Maintenance, Replacement & Repairs	\$ 1,085.00	\$ 12,000.00	\$ 10,915.00
Southwest Gas	\$ 2,326.11	\$ 7,500.00	\$ 5,173.89
Tucson Electric	\$ 1,090.81	\$ 10,000.00	\$ 8,909.19
City of Tucson Water	\$ 689.64	\$ 3,000.00	\$ 2,310.36
Contracted Housekeeping Monthly (12x\$200)	\$ 600.00	\$ 2,400.00	\$ 1,800.00
Other (permits/termites/furniture)		\$ 2,000.00	\$ 2,000.00
Subtotal	\$ 6,951.56	\$ 45,400.00	\$ 38,448.44
TOTAL EXPENSES	\$ 11,984.92	\$ 79,550.00	\$ 67,565.08
Reserve Transfer		\$ 3,050.00	\$ 3,050.00
TOTAL EXPENDITURES AND TRANSFER	\$ 11,984.92	\$ 82,600.00	
NET INCOME (not including reserve transfer)	\$ 68,545.08		
Checking and Reserve Funds			
	Checking	Reserve	Total
Balance 1/1/2020	\$ - (1)	\$ 111,506.44 (1)	\$ 111,506.44
Total Net Cash Flow	\$ 68,545.08	\$ 7.16 (2)	
Ending Balance 03/31/2020	\$ 68,545.08	\$ 111,513.60	\$ 180,058.68

(1) Beginning bank balances have been reconciled based on accrued reserve transfer.

\$246.75 expenses paid in 2019, cleared bank in 2020

\$23,730.61 Reserve transfer included in beginning balance, transfer actually completed in Jan2019

(2) Interest income in the savings account

Please contact the board via email:
CatalinaPueblo-Board@gmail.com

2020 Board of Directors

Jean Paine — *President*

Frank Bangs — *Vice President*

Connie Church — *Secretary*

Patricia Weigand — *Treasurer*

Mike Wattis — *Pools*

Joey Barbee — *Landscape*

Warren Edminster — *Architecture*

Committees:

Erosion & Water Harvesting: Frank Bangs, Chair
Giuseppe & Annamaria Biagini
JoAnn Marcus
Gail Reich
Jean Paine
Deb Perry

Architecture: Warren Edminster, Chair
Bev Edminster
Mark Sammons
Lee Strang
Jean Paine
Jake Hurwitz

Landscape: Joey Barbee, Chair
Mark Sammons
Jeannie Wager
Lee Strang
Gail Reich
Patsy Dickens
Doreen Frankel
Judy Liebman
Mary Porter
Bennett Porter

Pools: Mike Wattis, Chair
Mike Rockwell
David Holter
Marti Greason

Light bulbs:
Pueblo: Terry Temple & Dan Bares
Maria: Marti Greason & Olive Mondello
Adelita & Cerrada Adelita:
Mike Rockwell (West) Gail Reich (East)
Posada E.: Marianne Van Zyll
Posada W.: Russ & Glenda Melin
Minera: Pat Weigand & Gene Gieseler
Caballo & Cerrada Caballo:
Nancy Meister & Jay Book
Campbell: Jean Paine

Directory:
David Scott Allen, Cover & Photos
Bob Garrett: Map
Connie Church, Layout & Design

Newsletter:
PuebloRecipes: David Scott Allen
Garden Gallimaufry: Mark Sammons
Neighborhood News: Pat Weigand
Social Events Photos & Layout: Bob Garrett
Editor: Connie Church

Web site: www.catalinapueblo.com
Connie Church

MAY GARDEN CHORES continued

In tropical plants like citrus, iron chlorosis causes yellow leaves with bright green veins. Treat affected plants with dilute chelated iron.

Wash aphids and spider mites from tender new growth with a heavy blast of water. Failing that, use insecticidal soap, or move on to cautious spot-use of houseplant spray.

If you see dry rot (black areas) on prickly pear pads, remove and discard the plant.

Reliable Environmental Services
Robert: 520-300-9211
restucson@gmail.com

Tuesday: Trash Only
Friday: Trash & Recycle

Please have your trash out by 7:00 A.M. on both Tuesday (trash) and Friday (trash & recycle).

If you put your trash out the night before pick-up and you do not use your underground trash receptacles, be sure to secure your trash can so that wild animals cannot get in.

Trash pick-up is limited to three (3) containers. If you have more, you will be assessed \$5 per extra container unless you make other arrangements in advance with Robert. Green waste should be cut up into lengths no longer than 6 feet.

Robert & billing department can both be reached at 520-300-9211.

Reliable Environmental Services
P. O. Box 64999
Tucson, AZ 85728

\$53 per quarter

Our website, www.catalinapueblo.com, has all our Catalina Pueblo information including our CC&Rs, complete Rules, past minutes, past newsletters, plant lists, remodel forms, HOA information and more.